



## SCP 200 / CrystalProtect 150: Installation Instructions

### Application tools needed

- Squeegee (similar to squeegee used for window film application)
- Water containing very limited quantity of dishwasher rinse agent
- Knife blade

### Application temperature

The SCP 200 and CrystalProtect 150 should not be applied at a temperature below 13°C. The vehicle surface should be conditioned to a temperature of between 13°C and 30°C. Application in direct sunlight or windy conditions should be avoided

### Surface preparation

To have a perfectly clear appearance, the surface where the film will be applied needs to be perfectly clean and free from tar, grease and other contaminants.

On a freshly painted vehicle SCP200 or CrystalProtect 150 should not be applied before the paint is completely cured. Applying a protective film to a paint that is not fully cured may result in a poor visible aspect (bubbling due to paint outgassing).

Please consult your paint manufacturer's instructions regarding the curing process.

It has also been noticed that applying SCP 200 or CrystalProtect 150 on unpolished surfaces may result in bubbles appearing under the film after the application.

It is therefore advised to polish the surface with a non silicone based polish before applying SCP 200 or CrystalProtect 150.



## Application Steps

Wet application is advised to obtain a perfectly clear professional appearance.

Hands must be perfectly clean or wear shammy cloth gloves in order to avoid contamination of the film with dirt or fingerprints.

Lay the film on a clean surface and then spray the liquid solution on the vehicle surface where the film will be applied. If you don't wear gloves, wet your fingers to avoid fingerprints and contamination.

First remove the casting sheet protecting the non adhesive side of the film. Then, while removing the liner, generously spray the adhesive side of the film with the liquid solution. This will significantly ease positioning the film on the vehicle.

Once the film is correctly positioned, start applying the film, working with half of the film at a time, using a squeegee to expel air and liquid from the centre towards the edges. Also spray the top face of film to allow the squeegee to slide smoothly. This will avoid scratching the film with the squeegee.

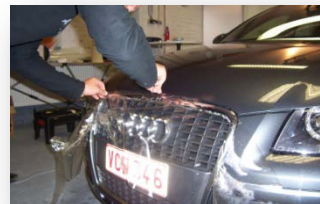
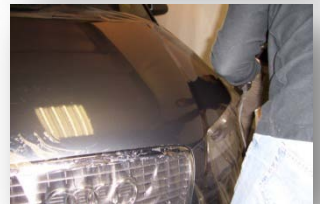
Continue to push out the remaining water or air bubbles from under the film ensuring the squeegee slides smoothly from the middle area of the film to the outside edges. This will produce a perfectly clear look.

If the film needs to be repositioned during the application process, remove it partially and respray some liquid on both the car body and the adhesive side of the film.

Insert the film edges into the body panel gaps, making sure all the water has been expelled from under the film.

Use a new sharp knife blade to cut the film making sure you apply the right pressure on the blade in order not to damage the paint. (If the car is equipped with parking sensors, do not forget to cut the film around these).

If necessary, a heat-gun can be used to dry the film, provided the T° does not exceed 80°C



**Warning:** All the information mentioned in this document are based on MACtac application expertise and are believed to be reliable. MACtac Europe SA does not guarantee or warranty the accuracy and completeness of this information.

For further information, please contact your local distributor or MACtac Sales Office  
Visit our website [www.mactac.eu](http://www.mactac.eu) to see an application demonstration