

## TL no 9 PRINTING TECHNIQUES

We have here below summarized the printing characteristics of the front materials of the MACprint range.

- +++ = Excellent printability
- ++ = Good general printability, printing test is recommended
- + = Acceptable quality in most cases, printing test is necessary

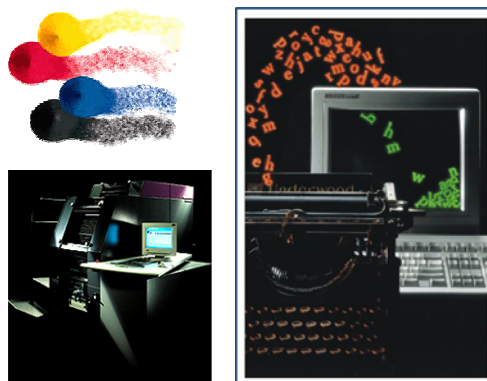


	Offset / Lithography	Letterpress	Screenprinting	Photocopier	Laser printing	Inkjet * waterbased	Digital Offset		
							Xérogaphy (i.e. Docucolor)	INDIGO (sheets)	XEIKON (rolls)
<b>WHITE - NON COATED</b>									
MACtab White	+++	+++	+++	++	++	+	+		
Tag	+++	+++	+++	+	+	++	+		
<b>WHITE - COATED</b>									
MACsnow	+++	+++	+++						
Velvet	+++	+++	+++						
MAClux	+++	+++	+++						
<b>WHITE – CAST COATED</b>									
Supergloss	+++	+++	+++						
Supergloss 180	+++	+++	+++						
<b>COLOURS</b>									
MACtab Colour	+++	+++	+++	++	++				
MACfluo	+++	+++	+++	++	++	+			
<b>COPIER – LASER – INKJET</b>									
STARcopy	+++	+++	+++	+++	+++	+++	+++		
MAClaser	+++	+++	+++	+++	+++	+	++		
STARset	+++	+++	+++	+++	+++	+++	+++	++	
<b>SPECIAL FILMS</b>									
MAClitho	+++	+++	+++						
STARvinyl	+++*	+++	+++						
Acétate	+++	+++	+++	++	++				
<b>METALLISED PRODUCTS</b>									
Lam. Foil	+++	+++	+++*						
Solid Foil	+++	+++	+++						
<b>SPECIALITIES</b>									
Mattopak Plus	+++	+++	+++	++	++				
Glossopak	+++	+++	+++						
MACsilky	+++	+++	+++	++	++				

\* please refer to the printing recommendations of the technical data sheet

Films (like Acetate, STARset) in laserprinting or photocopiers : it is advised to print after the die-cutting.

**DIGITAL "OFFSET"**



	Offset / Lithography	LETTERPRESS	SCREENPRINTING	PHOTOCOPIER	LASERPRINTING	INKJET *WATERBASED	Digital offset		
							Xérogaphy (i.e. Docucolor)	INDIGO (sheet)	XEIKON (rolls)
IMAGin Label TS 6627							++	++	
IMAGin Label TS 6628				++	++	+	+++	++	
IMAGin Label TS 6629							++	++	
IMAGin Label TF/TB 6627									+++
IMAGin Label TF/TB 6628									+++
IMAGin Label TF/TB 6629									+++